



**Mature Buffer Planting LMM2**  
 (along site boundary by 2040 is predicted to fully screens tanks)

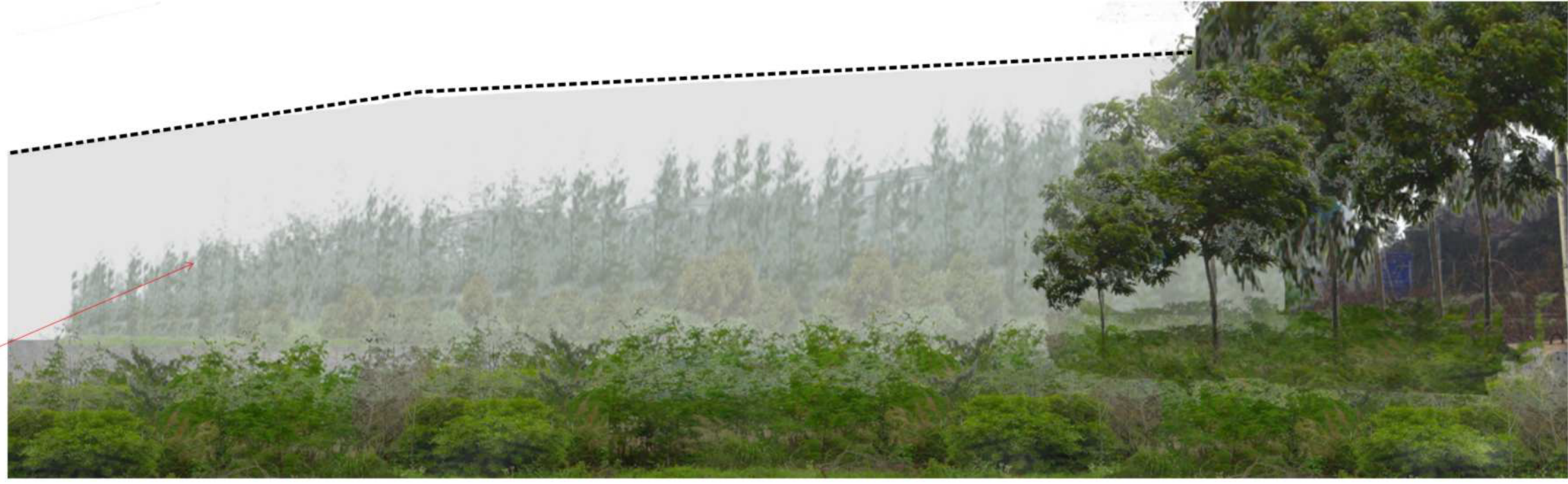


Photomontage of the proposed PAFF at Year 2040 showing Residual Impact (with mitigation measures and with full development of Phase 1 and Phase 2, from vpt.3.2 -SVR 3)

**Photomontage Viewpoint Location**



**Landscape Master Plan**  
 (At Year 2040, with Residual Impacts)



Photomontage of the proposed PAFF at Year 2040 showing Residual Impact Assuming the Possible Full Development of CED site (zoned for Special Industrial Use) by 2040

**CED Reclamation Site will be developed at 2040**  
 (The Photomontage assumes an industrial shed similar to the existing Shui Wing Steelmill)